



**2018 Open Finn European and U23 Open Finn European Championship
09 - 17 March 2018**

Federación Andaluza de Vela, vda. de la Libertad, s/n, Puerto Sherry, 11500, Pto. Sta. María, Cádiz, Spain

SAILING INSTRUCTIONS

Organizing Authority:

The Organizing Authority is the Federación Andaluza de Vela in conjunction with the Real Federación Española de Vela, International Finn Association and the Spanish Finn Class Association.

1. RULES

- 1.1. The regatta will be governed by the rules as defined in The Racing Rules of Sailing (RRS).
- 1.2. No national authority prescriptions will apply.
- 1.3. Decisions of the International Jury will be final as provided in RRS 70.5.
- 1.4. If there is a conflict between languages the English text will take precedence.
- 1.5. Appendix P, Special Procedures for Rule 42, will apply.
- 1.6. For medal races or other umpired races, World Sailing Addendum Q, Umpired Fleet Racing, will apply and takes precedence over any conflicting instructions.
- 1.7. In all rules governing this regatta;
 - 1.7.1. [DP] denotes a rule for which the penalty is at the discretion of the International Jury and may be less than disqualification.
 - 1.7.2. [NP] denotes a rule that shall not be grounds for protest by a boat. This changes RRS 60.1(a).
- 1.8. In RRS 44.2 insert after the first sentence: However, if Mark 1a is set, a boat may delay taking a penalty for an incident in the zone around Mark 1 or on the leg between Mark 1 and Mark 1a, until she has passed Mark 1a.

2. CODE OF CONDUCT [DP][NP]

- 2.1. Competitors and support persons shall comply with any reasonable request from a regatta official.
- 2.2. Competitors shall handle any boats or equipment provided by the organizing authority with proper care and seamanship, and in compliance with any written instructions.

3. COMMUNICATIONS WITH COMPETITORS

- 3.1. Competitor and Team Leader briefings:

Date	Time	Briefing	Location
Sun, 11 March	1230	Briefing	Club
Mon, 12 March to Sat, 17 March	0930	Daily morning briefing	Club
Mon, 12 March to Fri, 16 March	After protest time	Daily debriefing	Club

- 3.2. Notices to competitors will be posted on the official notice board located next to the Race Office. Notices may be duplicated on the event website to be found at <http://2018.finneuropeans.org>

4. CHANGES TO SAILING INSTRUCTIONS

- 4.1. Any change to the format or schedule of races will be posted by 2000 on the day before it will take effect and any change to the sailing instructions will be posted before 0900 on the day it will take effect.





5. SIGNALS MADE ASHORE

- 5.1. Signals ashore will be displayed at signal mast in front of the Race Office (see Addendum C)
- 5.2. When flag AP is displayed ashore, '1 minute' is replaced with 'not less than 60 minutes' in the race signal AP.
- 5.3. [DP][NP] Flag AP over H displayed ashore means 'Boats shall not leave the harbour or shore. Wait for further instructions.' This changes Race Signals AP over H.

6. RACING DAYS and OFFICIAL FUNCTIONS

Date	Time	Stage/Function	Location
Fri, 9 March	0930 - 1930	Measurement/Registration	High Performance Center F.A.V.
Sat, 10 March	1100 - 1900	Measurement/Registration	High Performance Center F.A.V.
Sat, 10 March	1930	Opening Ceremony	Puerto Sherry Hotel Columbus lounge
Sun, 11 March	0800 – 1800 1230	Measurement/Registration Competitors Meeting	High Performance Center F.A.V. Club
Sun, 11 March	See App FS	Practice Race	Race Area
Mon, 12 March	See App FS	Racing	Race Area
Tue, 13 March	See App FS	Racing	Race Area
Wed, 14 March	See App FS	Racing	Race Area
Thu, 15 March	See App FS	Racing	Race Area
Fri, 16 March	See App FS	Racing	Race Area
Sat, 17 March	See App FS	Racing	Race Area
Sat, 17 March	After Racing	Closing Ceremony & Prize Giving	Club

The format and race schedules are detailed in Sailing Instruction Appendix 'Format, Time Limits and Scoring'.

7. CLASS FLAGS

- 7.1. The Class flag will be:

Stage	Class Flag
Opening Series (OS)	Class flag - Class insignia on a white background
OS Final Race	Class flag over a white flag
Medal Race	Class flag over a yellow flag

8. COURSE AREAS

- 8.1. The course areas are shown in SI Addendum A.

9. THE COURSES

- 9.1. The diagrams in SI Addendum B show the courses, the course designations, the approximate angles between legs, the order in which marks are to be passed, and the side on which each mark is to be left.
- 9.2. No later than the warning signal, the race committee signal boat will display the course designation and the approximate compass bearing of the first leg.





10. MARKS

10.1. Marks 1, 1a/1o (offset mark), 2, 3,4 or associated gate marks, will be as follows:

Stage	Marks 1, 2	Marks 3,4	Mark 1a/1o	Replacement Mark	Port End Starting Mark	Finishing Outer Distance Mark
All Stages	Yellow cylinders	Yellow Cylinders	Red Spherical	Black cylinder	RC boat with orange flag	RC boat with orange flag

11. THE START

- 11.1. The starting line will be between a staff displaying an orange flag on the race committee vessel at the starboard end and a staff displaying an orange flag on the race committee vessel at the port end.
- 11.2. To alert boats that a race or sequence of races will begin soon, the orange starting line flag will be displayed with one sound at least five minutes before a warning signal is made.

12. CHANGE THE NEXT LEG OF COURSE

- 12.1. Courses will not be shortened. This changes RRS 32. The length and direction of legs of the course may be changed in accordance with RRS 33.
- 12.2. To change the next leg of the course, the race committee will lay a new mark, move the leeward gate, or move the finishing line and remove the original mark as soon as practicable. When in a subsequent change a new mark is replaced, it will be replaced by an original mark. After mark 1 has been replaced, mark 1a will not be reset. (This changes RRS 33(c))

13. THE FINISH

- 13.1. The finishing line will be between a staff displaying an orange flag on the race committee vessel and an orange flag on the race committee vessel at the port end.

14. TIME LIMITS AND TARGET TIMES

- 14.1. Time limits and target times are shown in the Sailing Instruction Appendix 'Format, Time Limits and Scoring'.

15. PROTESTS AND REQUESTS FOR REDRESS

- 15.1. Protest forms are available at the Race Office or the Jury Office in the Club. Protests and requests for redress or reopening shall be delivered to the Jury Office within the appropriate time limit.
- 15.2. The protest time limit is based on the time of the last boat to finish the race specified in the table below or when the Race Committee signals no more racing today, whichever is later:

Stage	Protest Time Limit
Opening Series – Last race of the day	90 mins
Opening Series – Final Race	90 mins
Medal Race – umpired	As Addendum Q

- 15.3. Notices will be posted as soon as possible after the protest time limit to inform competitors of hearings in which they are parties or named as witnesses. Hearings will be held in the protest room, located at the Jury Office in the Club beginning at the time posted which may be before the end of the protest time limit if all parties are available.
- 15.4. Notices of protests by the race, protest or technical committees will be posted to inform boats under RRS 61.1(b).
- 15.5. A list of boats that have been penalized under Appendix P for breaking RRS 42 will be posted.





- 15.6. A boat may accept a discretionary penalty for the breach of a rule subject to [DP] by acknowledging the breach before a hearing.
- 15.7. In RRS 66 change: 'On the last scheduled day of racing...' to 'On the last day of a series...'
- 15.8. On the last day of a series a request for redress based on a jury decision shall be delivered no later than 30 minutes after the decision was posted. This changes RRS 62.2.
- 15.9. For the purposes of SI 15, as series means both the series concluded before the Opening Series Final Race and the Opening Series including the Opening Series Final Race.

16. SCORING – scoring is described in the Sailing Instruction Appendix 'Format, Time Limits and Scoring'.

17. SAFETY REGULATIONS [DP][NP]

- 17.1. Competitors shall wear personal flotation devices at all times while afloat, except briefly while changing or adjusting clothing or personal equipment. This changes RRS 40.
- 17.2. Competitors shall comply with the event sign-out and sign-in procedures when going afloat and returning to the shore. Before leaving to race on each schedule day, but not earlier than 90 minutes before the scheduled time of the first warning signal of the day, and within the protest time limit after returning ashore.
- 17.3. The check-out and check-in point will be located at the Race Office.
- 17.4. Boats not leaving the shore for a scheduled race shall promptly notify the Race Office.
- 17.5. On arrival at the racing area, boats shall sail closely by the race committee boat, clearly showing their sail numbers.
- 17.6. A boat that retires from racing shall notify the race committee before leaving the racing area, or if that is not possible, shall notify the race office as soon as possible after returning ashore.
- 17.7. When the race committee displays flag V with repetitive sounds or broadcasts 'Code Flag Victor' on the designated VHF Channel, all official and coach boats shall monitor VHF Channel 72 for search, rescue and other instructions.

18. REPLACEMENT OF CREW OR EQUIPMENT [DP]

- 18.1. Substitution of competitors will not be allowed.
- 18.2. Substitution of damaged or lost equipment will not be allowed unless approved by the technical committee. Requests for substitution shall be made at the first reasonable opportunity in writing on a form available from the Race Office.

19. EQUIPMENT AND MEASUREMENT CHECKS [DP]

- 19.1. Details of pre-first race equipment inspection, location and schedules will be posted on the official notice board.
- 19.2. Equipment may be inspected at any time for compliance with the class rules and sailing instructions. When instructed by the technical committee, a boat shall proceed immediately to a designated area for inspection.
- 19.3. All measured equipment will be identified for the Championship and identified in accordance with instructions available at registration. Only identified equipment may be used during the Championship.
- 19.4. All items of equipment subject to event limitation control will be marked with the official event stamp or sticker. If a mark becomes unclear, insecure or lost, this shall be reported promptly to the Technical Committee so that the mark may be replaced before the next race or at the first reasonable opportunity.
- 19.5. All boats selected for equipment inspection shall be presented for inspection with the full equipment, including sails, personal flotation device(s) and personal equipment. Personal flotation devices shall provide

buoyancy in compliance with EN 393 or ISO 12402-5, level 50 or an equivalent. Personal flotation devices that rely on inflation devices to achieve buoyancy are not accepted.





20. IDENTIFICATION, ADVERTISING, CAMERAS and ELECTRONIC EQUIPMENT [DP][NP]

- 20.1. When provided by the organizing authority, boats or crew shall carry, display or wear the following as instructed.
 - 20.1.1. Yellow, blue or red bibs.
 - 20.1.2. Bow numbers. (see Addendum D)
 - 20.1.3. Event sponsor advertising.
 - 20.1.4. Boat cover with sponsor advertising
- 20.2. When provided by the organising authority, boats shall carry the following electronic equipment as instructed:
 - 20.2.1. Cameras,
 - 20.2.2. Sound equipment, and
 - 20.2.3. Position tracking equipment.
 - 20.2.4. Competitors shall make a genuine effort to comply with the instructions for operating the equipment as provided by the organising authority.
 - 20.2.5. While competitors should take every care of the equipment, the organising authority alone is liable for loss or damage to the cameras and any equipment used for installing the cameras on the boats.
 - 20.2.6. For the purposes of RRS Part 2 and the related Definitions, cameras and camera installation equipment are not considered to be part of the boat on which they are installed.
 - 20.2.7. Boats shall avoid contact with cameras and camera installation equipment on other boats; however, a breach of this sailing instruction shall not be subject to any penalty.

21. OFFICIAL BOATS

- 21.1. Official boats will be marked as follows:

Race Committee	Light blue flag with "F"
Technical Committee	Green flag with "Measurer"
International Jury	Yellow flag with "IJ"
Media	Pink flag with "PRESS-TV"
Rescue /Safety Boats	Pink flag

22. SUPPORT BOATS [NP][DP]

- 22.1. For the purposes of these sailing instructions a support boat includes any boat that is under the control or direction of a person who is providing physical, morale or advisory support to an athlete, including the gathering of data that may be used at a later time.
- 22.2. Support boats shall display their national flag or national (NOC Code) letters at least 200mm high and the identification number provided by Organization Authority clearly visible from both sides.
- 22.3. Support boats shall not interfere with boats racing or official boats nor create a wake that affects boats racing.
- 22.4. Support boats shall not be positioned:
 - 22.4.1. Closer than 50 metres of any boat racing.
 - 22.4.2. Within 50 metres of the starting line and marks from the time of the preparatory signal until all boats have left the starting area, or the race committee signals a postponement, general recall or abandonment.
 - 22.4.3. Between any boat racing and the next mark of the course.
 - 22.4.4. Within 50 metres of any mark of the course while boats are in the vicinity of that mark.
 - 22.4.5. Within 50 metres of the finishing line and marks while boats are finishing.





- 22.5. In addition, support boats that are motoring above 5 knots shall remain at least 150 metres from any boat racing.
- 22.6. Support boats shall comply with any reasonable request from a regatta official.
- 22.7. The use of support boats for purposes other than training or supporting a competitor racing are prohibited.
- 22.8. Additional restrictions may apply to umpired races and will be posted on the official notice board.

23. TRASH DISPOSAL

- 23.1. Trash may be placed aboard support or official boats.

24. BERTHING AND BOAT PARK [NP][DP]

- 24.1. When ashore, boats shall be kept in the boat park.

25. RADIO COMMUNICATION [DP]

- 25.1. A boat shall neither make radio transmissions while racing nor receive radio communications not available to all boats, except in an emergency or when using equipment provided by the race committee. This restriction also applies to mobile telephones.

26. PRIZES

- 26.1. The class perpetual trophies will be awarded to the Winner of the Open European Championship and the Winner of the Open U23 European Championship. The first European will be crowned European Champion and the first U23 European sailor will be crowned U23 European Champion. Medals will be awarded to the top three Europeans in both divisions.
- 26.2. The Organizing Authority will provide prizes for the top 10 boats overall and top 5 sailors in the U23 division. Prizes will be awarded to the skippers finishing first in each race.

27. DISCLAIMER OF LIABILITY

- 27.1. Competitors participate in the regatta entirely at their own risk. See RRS 4, Decision to Race. Neither the organizing authority nor World Sailing will accept any liability for material damage or personal injury or death sustained in conjunction with or prior to, during, or after the regatta.



Sailing Instruction APPENDIX– Format, Time Limits and Scoring.

FS1 Format

Stage No	Stage Name	Total Races	Eligible Boats	Addendum Q Applies
1	Opening Series (OS)	10	All	No
2	Opening Series Final Race	1	All except boats placed 1-10 in Opening Series	No
3	Medal Race	1	Boats placed 1-10 in the OS	Yes

FS 1.1 The assignments for Stage 2 and 3 will be based on the ranking, after hearings, of the previous stage(s). The protest committee may extend the time for publishing assignments.

FS 1.2 There will be no Stage 2 or 3 unless 5 or more races have been completed in the Opening Series on Friday, 16 March.

FS 1.3 Latest warning signals

Stage No	Stage Name	Latest Warning Signal
1	Opening Series (OS)	16.00 on Fri, 16 March
2	Opening Series Final Race	14.00 on Sat, 17 March
3	Medal Race	15.30 on Sat, 17 March

FS2 Schedule of Races. *(This changes NoR 5.1)*

Date	Stage/Function	Scheduled No of Races	Time (1 st Warning)	Location
Sun, 11 March	Practice Race	1	1430	Racing Area
Mon, 12 March	Opening Series	2	1100	Racing Area
Tue, 13 March	Opening Series	2	1100	Racing Area
Wed, 14 March	Opening Series	2	1100	Racing Area
Thu, 15 March	Opening Series	2	1100	Racing Area
Fri, 16 March	Opening Series	2	1100	Racing Area
Sat, 17 March	Medal Race	1	1100	Racing Area
	OS Final Race	1	1200	

FS2.1 Races not sailed on the scheduled day may be sailed on a following day, except that no more than 3 races of the Opening Series shall be sailed on any day. A race that the first boat has completed 3 legs before being abandoned, shall count as a scheduled race for the purpose of this SI. However, no more than 1 race in the Opening Series will be sailed on Sat, 17 March unless needed to complete 5 races in the Opening Series.



FS 3 Time limits and target times are as follows:

Stage	Time Limit	Mark 1 Time Limit	Finish Window	Target Time
Stage 1 or 2 (1 or 2 races per day)	120	40	20	75
Stage 1 or 2 (3 races per day)	120	40	20	60
Stage 3	40	20	10	30

FS3.1 Boats that do not finish within the time stated in the Finish Window after the first boat sails the course and finishes, will be scored Did Not Finish. This changes RRS 35, A4 and A5.

FS3.2 If no boat rounds Mark 1 within the Mark 1 time limit, the race committee will abandon the race.

FS3 Scoring

FS3.1 A boat starting later than 4 minutes after her starting signal will be scored Did Not Start. This changes RRS A4 and A5.

FS3.2 The Opening Series will be scored in accordance with RRS Appendix A, excluding one score when 5 Opening Series races have been completed.

FS 3.3 The Championship score shall be the total of the Opening Series, plus the Opening Series Final Race or Medal Race score.

Stage No	Stage Name	Excluded Scores	Scoring System
1	Opening Series	1, when 5 Opening series races completed	RRS App A
2	OS Final Race	May be excluded, but still only one race may be excluded	RRS App A – all finishing scores plus 10 points. Letter scores based on number of boats in Stage 1. Then race scored as last race in Opening Series
3	Medal Race	Not excludable	RRS App A – Points doubled and all scores based on number of boats in the Medal Race.

FS3.4 The boats assigned to compete in the Medal Race will be ranked highest in the regatta except for a boat penalised under RRS 5, 6, 7 or 69.

FS3.5 For boats assigned to compete in the Medal Race, ties in the regatta score are broken by the Medal Race score. This changes RRS A8. For boats with the same points score in the Medal Race, ties in the regatta score are broken applying RRS A8 to the Stage 1 scores.

FS3.6 A boat assigned to compete in the Medal Race shall make a genuine effort to start, sail the course and finish. The penalty for a breach of this instruction will be ranking the boat tenth in the regatta. If there are two or more such boats, they will be ranked ninth and tenth etc., in order of their opening-series ranks, and so on. This changes RRS A2.

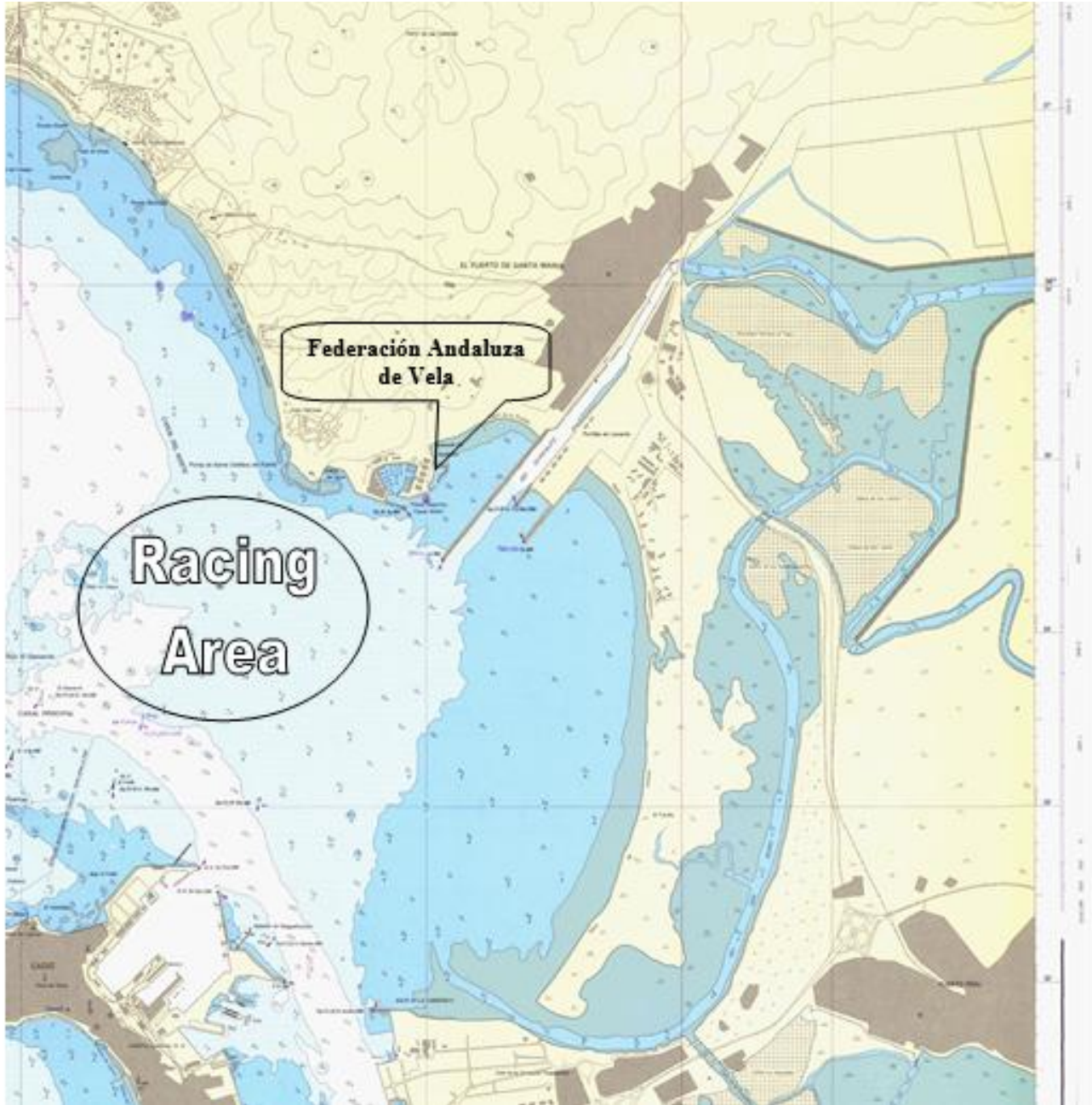
FS3.7 To request correction of an alleged error in posted race or series results, a boat may complete a scoring enquiry form available at the race office.

FS3.8 Four races are required to be completed to constitute a valid Championship.



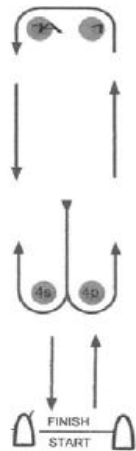


ADDENDUM A – Course Area Location.

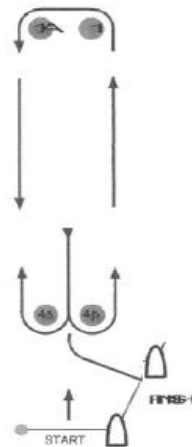




ADDENDUM- B - COURSE ILLUSTRATIONS and MARK ROUNDING ORDER

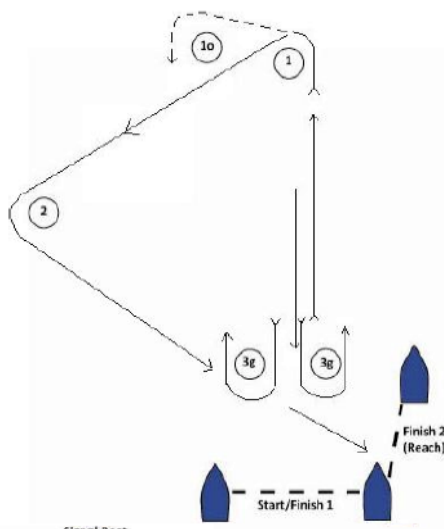


Signal LA2 Mark Rounding Order 1 - 1A - 4s/4p - 1 - 1A - Finish



Signal LAR2 Mark Rounding Order 1 - 1A - 4s/4p - 1 - 1A - 4p - Finish

COURSE	ROUNDING ORDER
T2	Start → 1(p) → 1o(p) → 3g → 1(p) → 2(p) → Finish (Reach)





ADDENDUM C – Venue Map.





ADDENDUM- D - Bow Number Placement.

BOW NUMBER AND EVENT SPONSOR STICKER TO APPLY VINYL BOW NUMBERS AND SPONSORS STICKERS ON HULL:

1 – Make Sure hull is clean!!! (Clean and let dry)

The numbers and stickers are made to be removable, so you need to wipe the hull with a solvent to remove any waxes. If a Teflon wax has been used on the boat repeat this step until tape sticks easily to hull.

2 – The bow numbers shall be displayed on both sides of the bow in accordance with the diagram. The sponsor's sticker shall be aft of the bow numbers.

3 – Remove wax paper backing from numbers and stickers by peeling away the top or corner of the backing paper.

4- Position, with masking tape if necessary, in the appropriate place, and remove the rest of the backing paper. A light spray of water will assist in sliding larger stickers into the correct position.

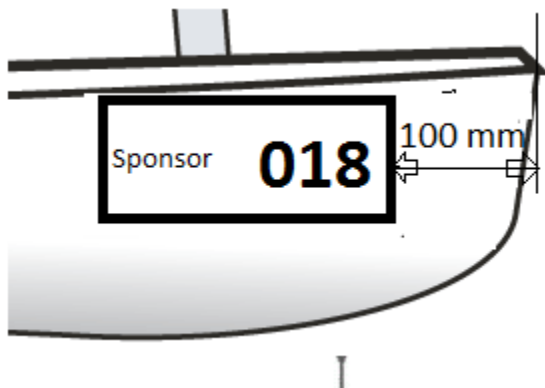
5 – Squeegee stickers to remove all air bubbles and water. Work from the center outwards towards edges, rub thoroughly.

** A Squeegee can be a credit card, plastic scraper, or any similar smooth piece of plastic.

6 – Peel any masking tape or outer sheet off boat pulling slowly making sure that you are pulling the tape back against itself, and not out away from the boat.

7 – Rub with soft towel.

8 - Please note the Sailing Instructions make it your responsibility to ensure your bow numbers remain in place and are visible.





ADDENDUM Q - UMPIRED FLEET RACES

Under rule 86.2 and Regulation 28.1.3, World Sailing has approved the use of these sailing instructions as an addendum to the sailing instructions in World Sailing 200-Point and 100-Point Events from January 22, 2017 and until changed, for umpired fleet racing in the last race(s) of each series for the Olympic classes. Similar events are also encouraged to use the addendum. This can be done under rule 86.3 if the national authority prescribes that rule changes are allowed for the purpose of development and testing. Please note that the national authority may prescribe that such changes require its approval.

Races may be sailed under the sailing instructions in this addendum only if the notice of race and the sailing instructions so state, with reference to the relevant version, and that version is posted on the official notice board.

Use of this addendum is recommended for races in which about ten one-design boats compete with umpires present. There should be one umpire boat for every three or four boats in the fleet.

When Addendum Q is posted on the official noticeboard, this paragraph and the three paragraphs above should be deleted. Nothing below should be changed or deleted.

This addendum has been approved by World Sailing in accordance with rule 86.2 and Regulation 28.1.3. It applies to all medal races and all pre-race or post-race activities related to them.

Version: June 12, 2017

Marginal marks indicate important changes from recent versions.

These sailing instructions change the definition Proper Course, and rules 20, 28.2, 44, 60, 61, 62, 63, 64.1, 65, 66, 70 and B5.

Q1 CHANGES TO RACING RULES

Additional changes to rules are made in instructions Q2, Q3, Q4, and Q5.

Q1.1 Changes to the Definitions and the Rules of Part 2 and Part 4

- (a) Add to the definition Proper Course: 'A boat taking a penalty or manoeuvring to take a penalty is not sailing a *proper course*.'
- (b) When rule 20 applies, the following arm signals are required in addition to the hails:
 - (1) for 'Room to tack', repeatedly and clearly pointing to windward; and
 - (2) for 'You tack', repeatedly and clearly pointing at the other boat and waving the arm to windward.Instruction Q1.1(b) does not apply to boards.

Q1.2 Changes to Rules Involving Protests, Requests for Redress, Penalties and Exoneration

- (a) The first sentence of rule 44.1 is replaced with: 'A boat may take a One-Turn Penalty in accordance with rule 44.2 when, in an incident while *racing*, she may have broken one or more of the rules of Part 2 (except rule 14 when she has caused damage or injury), rule 31 or rule 42.'
- (b) For boards, the One-Turn Penalty is one 360° turn with no requirement for a tack or a gybe.
- (c) Rule 60.1 is replaced with 'A boat may protest another boat or request redress provided she complies with instructions Q2.1 and Q2.4.'
- (d) The third sentence of rule 61.1(a) and all of rule 61.1(a)(2) are deleted. Rule B5 is deleted.
- (e) Rules 62.1(a), (b) and (d) are deleted. In a race where this addendum applies, there shall be no scoring adjustments for redress given under any of these rules for a previous race.





- (f) Rule 64.1(a) is changed so that the provision for exonerating a boat may be applied by the umpires without a hearing, and it takes precedence over any conflicting instruction of this addendum.
- (g) Rules P1 to P4 shall not apply.

Q2 PROTESTS AND REQUESTS FOR REDRESS BY BOATS

Q2.1 While racing, a boat may protest another boat under a rule of Part 2 (except rule 14) or under rule 31 or 42; however, a boat may only protest under a rule of Part 2 for an incident in which she was involved. To do so she shall hail 'Protest' and conspicuously display a red flag at the first reasonable opportunity for each. She shall remove the flag before, or at the first reasonable opportunity after a boat involved in the incident has taken a penalty voluntarily or after an umpire's decision. However, a board need not display a red flag.

Q2.2 A boat that protests as provided in instruction Q2.1 is not entitled to a hearing. Instead, a boat involved in the incident may acknowledge breaking a rule by taking a One-Turn Penalty in accordance with rule 44.2. An umpire may penalize any boat that broke a rule and was not exonerated, unless the boat took a voluntary penalty.

Q2.3 At the finishing line, the race committee will inform the competitors about each boat's finishing place or scoring abbreviation. After this has been done, the race committee will promptly display flag B with one sound. Flag B will be displayed for at least two minutes and then removed with one sound. If the race committee changes the scoring information provided at the finishing line while flag B is displayed, it will display flag L with one sound. Flag B will continue to be displayed for at least two minutes after any changes are made.

Q2.4 A boat intending to

- (a) protest another boat under a rule other than instruction Q3.2 or rule 28, or a rule listed in instruction Q2.1,
- (b) protest another boat under rule 14 if there was contact that caused damage or injury, or
- (c) request redress

shall hail the race committee before or during the display of flag B. The same time limit applies to protests under instruction Q5.5. The protest committee may extend the time limit if there is good reason to do so.

Q2.5 The race committee will promptly inform the protest committee about any protests or requests for redress made under instruction Q2.4.

Q3 UMPIRE SIGNALS AND IMPOSED PENALTIES

Q3.1 An umpire will signal a decision as follows:

- (a) A green and white flag with one long sound means 'No penalty.'
- (b) A red flag with one long sound means 'A penalty is imposed or remains outstanding.' The umpire will hail or signal to identify each such boat.
- (c) A black flag with one long sound means 'A boat is disqualified.' The umpire will hail or signal to identify the boat disqualified.

Q3.2 (a) A boat penalized under instruction Q3.1(b) shall take a One-Turn Penalty in accordance with rule 44.2.

(b) A boat disqualified under instruction Q3.1(c) shall promptly leave the course area.

Q4 PENALTIES AND PROTESTS INITIATED BY AN UMPIRE; ROUNDING OR PASSING MARKS

Q4.1 When a boat

- (a) breaks rule 31 and does not take a penalty,
- (b) breaks rule 42,





- (c) gains an advantage despite taking a penalty,
- (d) deliberately breaks a rule,
- (e) commits a breach of sportsmanship, or
- (f) fails to comply with instruction Q3.2 or to take a penalty when required to do so by an umpire,

an umpire may penalize her without a protest by another boat. The umpire may impose one or more One-Turn Penalties to be taken in accordance with rule 44.2, each signalled in accordance with instruction Q3.1(b), or disqualify her under instruction Q3.1(c), or report the incident to the protest committee for further action. If a boat is penalized under instruction Q4.1(f) for not taking a penalty or taking a penalty incorrectly, the original penalty is cancelled.

Q4.2 The last sentence of rule 28.2 is changed to 'She may correct any errors to comply with this rule, provided she has not rounded the next *mark* or *finished*.' A boat that does not correct any such error shall be disqualified under instruction Q3.1(c).

Q4.3 An umpire who decides, based on his own observation or a report received from any source, that a boat may have broken a rule, other than instruction Q3.2 or rule 28 or a rule listed in instruction Q2.1, may inform the protest committee for its action under rule 60.3. However, he will not inform the protest committee of an alleged breach of rule 14 unless there is damage or injury.

Q5 PROTESTS; REQUESTS FOR REDRESS OR REOPENING; APPEALS; OTHER PROCEEDINGS

Q5.1 No proceedings of any kind may be taken in relation to any action or non-action by an umpire.

Q5.2 A boat may not base an appeal on an alleged improper action, omission or decision of the umpires. A party to a hearing may not base an appeal on the decision of the protest committee. In rule 66 the third sentence is changed to 'A *party* to the hearing may not ask for a reopening.'

- Q5.3**
- (a) Protests and requests for redress need not be in writing.
 - (b) The protest committee may take evidence and conduct the hearing in any way it considers appropriate and may communicate its decision orally.
 - (c) If the protest committee decides that a breach of a rule has had no effect on the outcome of the race, it may impose a penalty of points or fraction of points or make another arrangement it decides is equitable, which may be to impose no penalty.
 - (d) If the protest committee penalizes a boat in accordance with instruction Q5.3 or if a standard penalty is applied, all other boats will be informed about the change of the penalized boat's score.

Q5.4 The race committee will not protest a boat.

Q5.5 The protest committee may protest a boat under rule 60.3. However, it will not protest a boat for breaking instruction Q3.2 or rule 28, a rule listed in instruction Q2.1, or rule 14 unless there is damage or injury.

